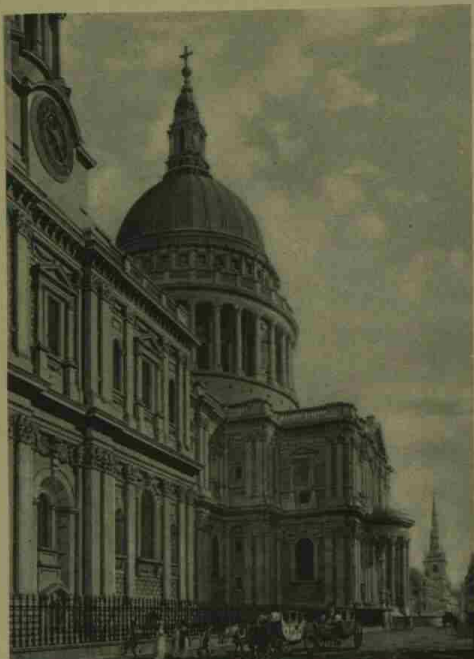


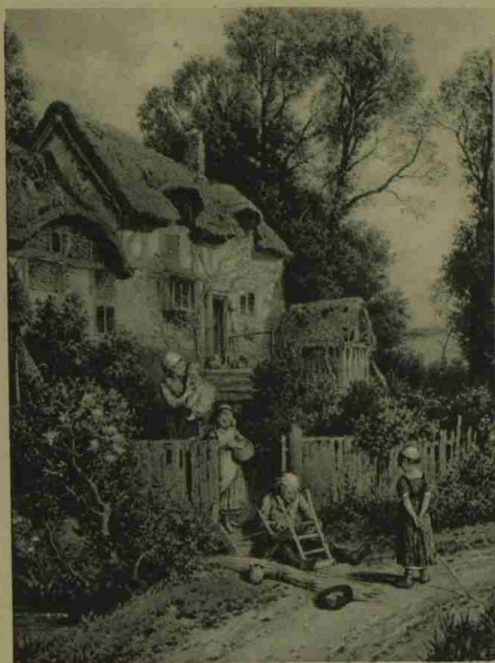
PICTURES BY OLD MASTERS:  
THE GUILDHALL EXHIBITION.



"ST. PAUL'S"; BY JAMES MALTON  
(DIED 1803).



"ARCHIBALD, NINTH EARL OF ARGYLL"; BY NICOLAS  
MAES (1632-1693).



"THE CHAIR MENDER"; BY BIRKET FOSTER  
(1825-1899).



"SIR EDWARD HALES AND HIS FAMILY"; A GROUP BY SIR PETER LELY  
(1618-1680).



AN UNIDENTIFIED PORTRAIT OF A MAN IN A BROWN  
COAT AND GREY WIG; BY SIR PETER LELY (1618-1680).



"THE COUNTESS OF OSSORY"; A PORTRAIT BY SIR  
PETER LELY (1618-1680).



"MISS HOLCROFT IN A WHITE DRESS"; BY OPIE  
(1761-1807).



"FLORA MACDONALD"; A PAINTING BY ALLAN  
RAMSAY (1713-1784).

The exhibition of thirty-five paintings and drawings from the collection of the late Lord Wakefield was opened recently at Guildhall by the Lord Mayor. With the exception of the portrait of the Earl of Argyll, by Nicolas Maes, the pictures are all by British artists, the most notable among them belonging to the seventeenth and eighteenth centuries. The most outstanding of the three paintings by Sir Peter Lely is a group of Sir Edward Hales, his wife, and their four children. Among the water-colours, an admirable drawing of St. Paul's, with carriages, horses and figures in the

foreground, by James Malton, and three by Turner are particularly worthy of note. Birket Foster's "The Chair Mender"—shown seated outside a cottage with children watching him at work—is especially interesting at the moment in view of the high prices which several of his drawings fetched recently in the auction rooms. The pictures on exhibition, in accordance with the late Lord Wakefield's wishes, Lady Wakefield has presented to the Corporation of the City of London, the National Gallery, and the Victoria and Albert Museum.